



**6"-20" STRAP-ON
LOW PRESSURE METERS
MODEL
LP04, LP12, LP32**

**OPERATION AND MAINTENANCE MANUAL
PARTS LIST**

FEATURING:

- *CERAMIC BEARING CARTRIDGE
- *STAINLESS STEEL SADDLE & U-BANDS
- *MODEL CN06-2 INDICATOR-TOTALIZER
- *ONE PIECE SEPARATOR/SPINDLE AND THREADED REVERSE THRUST BEARING CARTRIDGE



3255 WEST STETSON AVENUE
HEMET, CALIFORNIA 92545 U.S.A.

PHONE: 951-652-6811
FAX: 951-652-3078
VISIT OUR WEBSITE: www.mccrometer.com

WARRANTY

This Warranty shall apply to and be limited to the original purchaser consumer of any McCrometer product. Meters or instruments defective because of faulty material or workmanship will be repaired or replaced, at the option of McCrometer, free of charge, FOB the factory in Hemet, California, within a period of one (1) year from the date of delivery.

Repairs or modifications by others than McCrometer or their authorized representatives shall render this Warranty null and void in the event that factory examination reveals that such repair or modification was detrimental to the meter or instrument. Any deviations from the factory calibration require notification in writing to McCrometer of such recalibrations or this Warranty shall be voided.

In case of a claim under this Warranty, the claimant is instructed to contact McCrometer, 3255 W. Stetson Ave., Hemet, California 92545, and to provide an identification or description of the meter or instrument, the date of delivery, and the nature of the problem.

The Warranty provided above is the only Warranty made by McCrometer with respect to its products or any parts thereof and is made expressly in lieu of any other warranties, by course of dealing, usages of trade or otherwise, expressed or implied, including but not limited to any implied warranties of fitness for any particular purpose or of merchantability under the uniform commercial code. It is agreed this Warranty is in lieu of and buyer hereby waives all other warranties, guarantees or liabilities arising by law or otherwise. Seller shall not incur any other obligations or liabilities or be liable to buyer, or any customer of buyer for any anticipated or lost profits, incidental or consequential damages, or any other losses or expenses incurred by reason of the purchase, installation, repair, use or misuse by buyer or third parties of its products (including any parts repaired or replaced); and seller does not authorize any person to assume for seller any other liability in connection with the products or parts thereof. This Warranty cannot be extended, altered or varied except by a written instrument signed by seller and buyer.

This Warranty gives you specific legal rights, and you may also have other rights which vary from state to state.

McCrometer reserves the right to make improvements and repairs on product components which are beyond the Warranty period at the manufacturer's option and expense, without obligation to renew the expired Warranty on the components or on the entire unit. Due to the rapid advancement of meter design technology, McCrometer reserves the right to make improvements in design and material without prior notice to the trade.

All sales and all agreements in relation to sales shall be deemed made at the manufacturer's place of business in Hemet, California and any dispute arising from any sale or agreement shall be interpreted under the laws of the State of California.

LOW PRESSURE METER INDEX

- I. UNCRATING
- II. INSTALLATION
 - 1. Flanged Tube Meters
 - 2. Plain End Tube Meters
 - 3. Strap-on Saddle Meters
 - A. Align
 - B. Mark
 - C. Scribe
 - D. Cut Out
 - E. Straightening Vanes
 - F. Meter Assembly
- III. METER SERVICE SCHEDULE
- IV. METER SADDLE ASSEMBLY
- V. WORKING AREA
- VI. INDICATOR-TOTALIZER
 - 1. Bonnet Mounting Screws
 - 2. Indicator Mounting Screws
 - 3. Meter Change Gears
 - 4. Indicator-Totalizer
 - 5. Gears
- VII. GEARBOX
- VIII. VERTICAL SHAFT ASSEMBLY
- IX. MITER GEAR FRAME ASSEMBLY
 - 1. Driven Miter Gear Assembly
 - 2. Drive Miter Gear Assembly
 - 3. Components
- X. PROPELLER ASSEMBLY
 - 1. Propeller Removal
 - 2. Reverse Thrust Bearing Cartridge
 - 3. Water Lubrication
 - 4. Ceramic Bearing Cartridge
 - 5. Spindle Ceramic Sleeve
 - 6. Separator/Support Spindle Assembly
 - 7. Propeller Installation
 - 8. Thrust Bearing Cartridge Assembly
 - 9. Propeller Bearing
- XI. INSPECTION
- XII. REASSEMBLY
 - 1. Miter Gear Frame Assembly
 - 2. Gearbox
 - 3. Vertical Shaft Assembly
 - 4. Change Gears
 - 5. Indicator-Totalizer
 - 6. Bonnet Assembly
 - 7. Propeller Assembly
 - 8. Meter Saddle D-Ring

LOW PRESSURE METER INSTALLATION

I. UNCRATING. When uncrating the meter, any damage due to rough or improper handling should be reported to the transportation firm and McCrometer. If, for any reason, it is determined that the unit or parts of the unit should be returned to the factory, please contact McCrometer for clearance prior to shipment. Each unit must be properly crated to prevent any further damage. The factory assumes no responsibility for equipment damage in return shipment due to improper packaging. The shipping crate contains the following items:

Low Pressure Meter Assembly with	
CNO6-2.....	1
Mounting Equipment as required	-
Operation and Maintenance Manual	1
Tool T-2402X-1.....	1

II. INSTALLATION of McCrometer Low Pressure Meters varies depending upon the type and model of meter selected for each application. The meter must have a full flow of liquid for proper accuracy. Fully opened gate valves, fittings, or other obstructions that tend to set up flow disturbances should be a minimum of ten pipe diameters upstream and two pipe diameters downstream from the meter. Installations with less than ten pipe diameters of straight pipe require straightening vanes. Meters with straightening vanes require at least five pipe diameters upstream and one pipe diameter downstream from the meter. The meter installations fall into three basic categories:

- 1. FLANGED TUBE METERS** can be installed exactly as you would install any short length of flanged pipe. Flanged ends are standard pattern and drilling for any meter size. Fully opened gate valves, fittings, or other obstructions that tend to set up flow disturbances should be a minimum of five pipe diameters upstream and one pipe diameter downstream from the meter.
- 2. PLAIN END TUBE METERS** can be installed similar to replacing a short length of plain end pipe in the line by either welding or by using one of a variety of pipe couplings available. **Note:** Meter saddle assembly (#16) should be removed before welding (see step IV). Fully opened gate valves, fittings, or other obstructions that tend to set up flow disturbances should be a minimum of five pipe diameters upstream and one pipe diameter downstream from the meter.
- 3. STRAP-ON SADDLE METERS** can be installed on existing pipeline by cutting a hole of proper size in the existing pipeline. The installation steps outlined below should be followed carefully to achieve proper mounting of the meter:
 - A. ALIGN** the cutout template in the desired position for the meter on the pipe. Make certain that the center line of the pipe and the center line marked on the template are parallel with each other.

B. MARK the pipe using a center-punch as indicated on the cutout template. These marks will help to properly align the saddle over the cutout opening.

C. SCRIBE the pipe along the line specified for your meter size cutout.

D. CUT OUT the section of pipe within the scribed line and remove all burrs, slag, and rough edges from the inside and outside of the cutout section.

E. STRAIGHTENING VANES are recommended when there are less than ten pipe diameters of straight pipe (no fittings or obstructions) directly upstream from the meter location. Straightening vanes are available from the factory. See Straightening Vane Installation Instructions if required for your meter.

F. METER ASSEMBLY should be placed on the pipe with the "D" shaped ring gasket in position on the bottom of the saddle. The saddle must be positioned so that the D-ring maintains contact with the surface of the pipe completely around the cutout opening. Align the centerline of the saddle with centerline of the pipe and locate the saddle so that it is exactly between, and aligned with, the center punch marks on the pipe. Each edge of the meter saddle should be approximately 1/8" from the center punch mark on the pipe. U-Bolt nuts should be tightened evenly. **WARNING:** Customers are warned that the U-Bolt nuts are to be tightened evenly to approximately 30 foot pounds torque. This is sufficient to seal the saddle to the pipeline. Additional tightening may be required to seal the saddle on rough or irregular pipe (60 FOOT POUNDS MAXIMUM).

LOW PRESSURE METER OPERATION AND MAINTENANCE MANUAL

III. MCCROMETER products have been carefully designed to be as maintenance free as possible. Periodic preventive maintenance, however, is highly recommended and should be practiced according to schedule to assure continuous accuracy and trouble-free performance of your propeller meters. The maintenance and inspection procedure can also be used as a guide to locating a problem in the unit that may be the cause of abnormal meter operation.

Routine preventative maintenance should be performed on all meters, which includes cleaning and an inspection of the propeller and its bearing. The interval between inspections depends on the water quality and the usage of the meter. The initial inspection should be performed after one to two years of service, to determine the period between future inspections. After five to ten years, the complete meter should be inspected to ensure years of dependable service.

IV. METER SADDLE ASSEMBLY (#14) should be removed from the service line by removing the U-strap nuts (#54) and lifting up the rear (downstream) portion of the meter saddle (#14), carefully pulling the assembly back (downstream) and up at the same time to allow the propeller (#40) to clear the cutout opening in the pipeline so the meter can be lifted free. Inspect the meter saddle D-ring (#56) for any sign

of damage and replace, if necessary. Replace the meter assembly (#14) with a dummy cover saddle if the service line is to remain in operation.

V. WORKING AREA chosen for disassembly and reassembly of the internal meter components should be clean to reduce the chance of dust or dirt particles being introduced into the meter mechanism.

VI. INDICATOR-TOTALIZER service procedure should include removal, cleaning, and inspection of the unit noting any excessive wear on the gears and other wear points that may lead to operational problems in the unit.

1. BONNET MOUNTING SCREWS (#2), located beneath the indicator-totalizer bonnet lid, should be removed and the entire bonnet (#1) lifted off the meter. Replace the O-ring seals around each of the four screws (#3) and at the bottom of the bonnet (#4) and cover each of the new O-rings with a thin coat of silicone grease.

2. INDICATOR MOUNTING SCREWS (#6) and shakeproof washers (#7) holding the indicator-totalizer unit (#5) to the meter head (#13) should be removed and the unit lifted off, exposing the A-drive gear (#11) attached to the top of the vertical shaft (#14).

3. METER CHANGE GEARS should be inspected for any sign of wear. The A-(drive) gear (#11) is attached to the top of the vertical shaft (#14), and the B-(driven) gear (#12) is attached to the bottom of the indicator (#5). The position of the A-drive gear should be checked and adjusted if necessary to position the top face of the gear 1/8 inch below the top surface of the meter head (#13). The position of the B-driven gear top face should be 1/8 inch below the bottom of the indicator-totalizer.

4. INDICATOR-TOTALIZER UNIT (#5) should be cleaned thoroughly using a mild soap and a soft brush. Under no circumstances should the entire unit be immersed in the soap or should any metal object be used when cleaning and inspecting the internal parts of the indicator-totalizer unit.

5. GEARS within the indicator-totalizer unit (#5) should be inspected carefully. If any excessive wear is visible on the gear teeth and other wear points, the unit must be returned to McCrometer for repair.

VII. GEARBOX (#20) on McCrometer meters is sealed and filled with gearbox oil to assure the long life and proper operation of the parts contained in the miter gear frame assembly (#29). Before disassembling the lower meter assembly, the oil must be emptied from the gearbox (#20). Vertical shaft assembly (#17) must be removed before the gearbox oil can be drained.

VIII. VERTICAL SHAFT ASSEMBLY (#17) is pulled directly out the top of the meter after removing two screws (#19) inside the meter head (#13). Spin the upper bearing assembly (#18) gently, checking for any sign of wear. Inspect the vertical shaft assembly (#17) to be sure it is not bent or damaged. To drain gearbox oil, turn meter over onto the meter head (#13) and drain oil into a container.

IX. MITER GEAR FRAME ASSEMBLY (#29) can be pulled out of the back of the gearbox (#20) after removing four screws (#39). Spin the driven magnet (#32) to make sure the unit runs freely and inspect the teeth on both the drive (#34) and the driven (#35) miter gear assemblies for any sign of excessive wear. If the assembly spins freely and the miter gears (#34 & #35) are not worn, there should be no further inspection or disassembly of the unit. Should this service procedure show that the unit does not spin freely or that the miter gears (#34 & #35) are worn, the miter gear frame assembly (#29) should be disassembled, as the following steps indicate, and all worn or damaged parts replaced.

1. **DRIVEN MITER GEAR ASSEMBLY (#35)** can be removed by loosening the allen head set screw, located on the side of the gear hub, and pushing the driven miter gear shaft (#37) out of the assembly. Note the location of the shim washer (#36), if any, to be sure it is repositioned properly when reassembling the miter gear frame assembly (#29). When reassembling be sure the set screws go into recess in the miter gear shafts (#32 & #37), or damage could result. Be sure clevis end of the driven miter gear shaft (#37) is located at the same end as the miter gear or the meter will subtract from the totalizer.
2. **DRIVE MITER GEAR ASSEMBLY (#34)** can be removed by loosening the allen head set screw, located on the side of the gear hub, and pulling the driven magnet and shaft assembly (#32) out the front of the miter gear frame (#29). Note any shim washer (#36) that may be positioned behind the drive miter gear (#34) when removing the shaft (#32).
3. **COMPONENTS** of the miter gear frame (#29) as well as the gearbox (#20) should be completely inspected at this point of disassembly. Each part of the miter gear frame assembly (#29) should be carefully inspected to determine the origin of any operational problem and those parts that are damaged or worn should be replaced. Clean the parts of the unit and reassemble, reversing steps (1) and (2) above.

X. PROPELLER ASSEMBLY (#40) inspection includes cleaning the ceramic sleeve bearing (#42), separator assembly (#21), drive magnet (#44) and the propeller assembly (#40).

1. **PROPELLER REMOVAL** can be accomplished by first removing the thrust bearing cartridge assembly (#51). Loosen the set screw (#50) in the side of the nose of the propeller. Remove the thrust bearing cartridge (#51) by turning it counterclockwise while holding the propeller in place.

2. **REVERSE THRUST BEARING CARTRIDGE (#47)** must now be removed. Turn the propeller (#41) so that the allen wrench clearance hole is lined up with the set screw in the side of the reverse thrust bearing cartridge (#47). The location of the set screw is marked by a small hole drilled in the face of the reverse thrust bearing cartridge. With a 5/64 inch allen wrench, loosen the set screw (#48) in the reverse thrust bearing cartridge (#47) two to three turns, which will allow the cartridge to be unscrewed without damaging the spindle thread.

Note: If the bearing area appears to be clogged with dirt or sediment, making it difficult to locate the set screw (#48) or to allow the allen wrench to fit into the set screw socket, then the bearing area should be flushed out with water. Insert Tool T-2402X-1 into the propeller through the threaded nose. The tabs in the tool should engage in the screwdriver slot in the end of the reverse thrust bearing cartridge (#47). Remove the propeller assembly (#40) and reverse thrust bearing cartridge (#47) by turning Tool T-2402X-1 counterclockwise, unscrewing the reverse thrust bearing cartridge (#47) from the spindle (#21). The propeller assembly with reverse flow cartridge will now slide off the spindle.

WARNING: If the reverse thrust cartridge does not unscrew easily, it may be because the set screw was not unscrewed enough. If unscrewing the reverse flow cartridge is continued with the set screw binding on spindle thread, damage to thread could occur.

3. **WATER LUBRICATION** of the ceramic sleeve bearing (#42) is achieved by means of two openings in the end of the thrust bearing cartridge (#51) which allows air to be purged from the bearing area. These should be cleared of any foreign material by running a small wire through the holes on either side of the screwdriver slot.

4. **CERAMIC BEARING CARTRIDGE (#42)** and drive magnet (#44) should be cleaned of any foreign material and inspected for damage. Using a bottle brush, thoroughly clean the ceramic bearing surface (#42) and the magnet inside diameter (#44). After cleaning the propeller, flush the inside out with water. The outside surfaces of the propeller should also be cleaned to assure a smooth, unrestricted flow across the surface of the propeller. Do not use an oil based solvent in cleaning, as damage to the assembly could occur.

5. **SPINDLE CERAMIC SLEEVE (#23)** and the O.D. or surface of the separator (#21) should be cleaned and inspected for any substantial amount of wear. The thrust bearing (#51) should be checked for any damage. If it is determined that the spindle ceramic sleeve (#23) or separator (#21) are worn sufficiently, the separator/support spindle assembly (#21) should be replaced.

6. **SEPARATOR/SUPPORT SPINDLE ASSEMBLY (#21)** can be removed for replacement by removing the four mounting screws (#24) which thread into the gearbox. Separator O-ring (#25) should be replaced and the new O-ring (#25) covered with a thin coat of silicone grease. The separator and support spindle assembly (#21) can then be replaced in the front of the gearbox (#20) with a firm push, gently rotating the assembly at the same time. Replace and tighten

the four mounting screws (#24).

7. PROPELLER INSTALLATION is accomplished by following these steps:

- a) The reverse thrust cartridge set screw (#48) should be protruding out of the reverse thrust bearing cartridge so it will not bind up on the spindle thread. **Note:** Look through the end of the propeller and hole in the reverse thrust cartridge to be sure the set screw is not showing.
- b) Slide the propeller assembly onto the support spindle (#21) until the reverse thrust bearing cartridge (#47) contacts the threads on the end of the spindle (#21). Using Tool T-2402X-1, thread the reverse thrust bearing cartridge onto the spindle. If you feel any resistance when threading the reverse thrust cartridge on, stop at once and check to be sure the set screw is not binding on the thread. Be careful not to cross-thread the reverse thrust bearing cartridge. Thread the reverse thrust bearing cartridge (#47) onto the spindle (#21) until the trailing edge of the propeller contacts the gearbox (#20). Set the proper end play by inserting a 5/64" allen wrench into the reverse thrust bearing set screw (through the side of the propeller) and loosen the reverse thrust bearing cartridge (#47) 1/2 turn counterclockwise. Tighten the set screw in reverse thrust bearing cartridge. There should be approximately .020" clearance between the gearbox (#20) and trailing edge of the propeller when the propeller is pulled forward (away from the gearbox). The propeller must not contact the gearbox.

8. THRUST BEARING CARTRIDGE ASSEMBLY (#51) should be inspected for damage and replaced in the nose of the propeller. The thrust bearing cartridge (#51) is used to adjust the amount of longitudinal end play of the propeller assembly on its spindle (#21), which should be about 1/64 inch. End play can be adjusted by turning the thrust bearing cartridge assembly (#51) clockwise until it tightens against the end of the support spindle (#21), then turning thrust bearing cartridge (#51) counterclockwise 1/8 of a turn. Tighten set screw (#50). Check the longitudinal end play of the propeller to insure it's not excessive and does not allow the propeller (#41) to contact the gearbox (#20). Check the clearance between the propeller (#41) and gearbox (#20). The clearance should be approximately .010" between the gearbox (#20) and trailing edge of the propeller when the propeller is pushed back (toward the gearbox). The propeller assembly (#40) must spin freely.

9. PROPELLER BEARING (#42) can be checked for excessive radial play by rocking the propeller (#41) gently from side to side on the spindle (#21). Some play is required for proper operation of the water lubricated ceramic sleeve bearing.

XI.INSPECTION of all internal meter parts that may be replaced in the field has been accomplished at this point. Should any of the meter parts, upon inspection, appear to be damaged or excessively worn, they must be replaced to assure proper meter operation and prevent further damage.

XII.REASSEMBLY is necessary at this point. Before reassembling any parts, make certain that each is cleaned of any dust or dirt and properly lubricated. Cost for replacement parts not covered by warranty are available from current parts and price list. If it is determined that the meter

should be returned for repair, please notify McCrometer prior to shipment. Each meter must be properly packaged to prevent damage to the meter in shipment.

1. MITER GEAR FRAME ASSEMBLY (#29) can be replaced in the back of the gearbox (#20) with a firm push, gently rotating the assembly at the same time. Replace the miter gear frame O-ring (#38) and cover the new O-ring with a thin coat of silicone grease before replacing the assembly (#29). Make certain that the assembly is installed in a position such that the drive clevis portion of the driven miter gear shaft (#37) can accept the driven clevis portion of the vertical shaft assembly (#17). Secure with four mounting screws (#39).

2. GEARBOX (#20) must be filled with one ounce of 10w mineral oil. A small funnel or an oil can with a small nozzle will make filling the gearbox (#20) easier. Pour the oil through the opening in the top of the meter head (#13).

3. VERTICAL SHAFT ASSEMBLY (#17) should be inserted gently into the gearbox (#20) through the opening in the top of the meter head (#13). Rotate the shaft gently until it is engaged in the driven miter gear shaft (#37) of the miter gear frame assembly (#29). Replace and secure two screws (#19) that hold the upper bearing (#18) in place. Do not overtighten the screws (#19) as this could cock the bearing (#18) and bind the vertical shaft (#17). Turn the top of the vertical shaft (#17) to check for any bind or drag. Should any bind or drag be apparent, it can usually be corrected by adjusting the vertical shaft collar and bearing assembly (#18). Loosen the set screw (#19) in the side of the assembly (#18) and slide the shaft (#17) downward until it rests against the driven miter gear shaft (#37), then lift up about 1/64 inch. Tighten set screw (#19).

4. CHANGE GEARS (#11 & #12) should be checked again to make certain they are in proper alignment (see step VI-3). The gear teeth should be lubricated with a light grease to assure longer life.

5. INDICATOR-TOTALIZER mechanism (#5) should be placed on the meter head (#13) with the mounting screws and shakeproof washers (#6 and #7). The B-driven gear (#12) should be set in the cutout in the meter head (#13). Do not tighten mounting screws (#6) until the gear mesh has been properly adjusted. To adjust gear mesh slide the indicator-totalizer mechanism (#5) towards the A-drive gear (#11) until the unit stops because of full gear mesh. Now back off the indicator-totalizer mechanism 1/64 inch and tighten mounting screws (#6).

6. BONNET ASSEMBLY (#1) should be cleaned and replaced over the indicator-totalizer unit (#5) after replacing the desiccant bag. Secure four screws (#2) beneath the bonnet lid. Do not overtighten the mounting screws (#2) as this will result in damage to the screw O-rings (#3).

7. PROPELLER ASSEMBLY (#40) should be dipped in water to lubricate the propeller ceramic sleeve bearing (#42). Spin the propeller (#40) gently to make certain the meter operates smoothly and no bind or drag is apparent.

8. METER SADDLE D-RING (#56) should be inspected for any sign of damage and covered with a thin coat of silicone grease. The meter can now be installed in the service line (see step II-F for proper installation). When replacing the meter on the line, make certain that the top of the pipeline is smooth and free of any foreign material. Make certain that no foreign materials are attached to the inside of the service line pipe, as any flow disturbance or obstruction may affect the accuracy of the meter.

6"-20" STRAP-ON LOW PRESSURE METERS MODEL LP04, LP12, LP32 PARTS LIST

NO.	QTY.	PART NUMBER	DESCRIPTION
1	1	7-LP32-*	LOW PRESSURE SADDLE METER HEAD ASSEMBLY
	1	5-4337	INDICATOR-TOTALIZER BONNET ASSEMBLY
	1	1-4338	INDICATOR-TOTALIZER BONNET LID (W/PIN)
2	4	1-1115-10-56H	SCREW, BONNET MOUNTING (ea.)
3	4	1-1551-6	O-RING, BONNET SCREW MOUNTING (ea.)
4	1	1-1551-49	O-RING, BONNET
5	1	5-CN06-2	INDICATOR-TOTALIZER MECHANISM (SPECIFY DIAL)
	1	1-4013-‡	DIAL (AS SPECIFIED)
	2	1-1118-3-3	SCREW, DIAL MOUNTING (ea.)
6	1	1-4321	INDICATOR HAND
	1	1-4326	TEST HAND
	2	1-1113-10-6	SCREW, INDICATOR-TOTALIZER MOUNTING (ea.)
7	2	1-1302-10	SHAKEPROOF WASHER, IND-TOT MTG. SCREW (ea.)
11A	1	3-2176	A-GEAR ASSEMBLY (6-15 TEETH) (SPECIFY # OF TEETH)
11B	1	3-2157	A-GEAR ASSEMBLY (16-54 TEETH) (SPECIFY # OF TEETH)
12	1	3-2163	B-GEAR ASSEMBLY (SPECIFY # OF TEETH)
13	1	2-2440	METER HEAD
14	1	3-2414	STRAP-ON SADDLE ASSEMBLY
15	1	1-1551-50	O-RING, METER HEAD INNER
16	1	1-1551-25	O-RING, METER HEAD OUTER
17	1	2-2520-‡	VERTICAL SHAFT ASSEMBLY
18	1	3-2352	VERTICAL SHAFT COLLAR & BEARING ASSEMBLY
19	2	1-1113-6-4	SCREW, VERTICAL SHAFT COLLAR & BEARING MTG. (ea.)
20	1	2-2238-‡	GEARBOX
21	1	4-2455-2	SEPARATOR/SUPPORT ASSEMBLY
23	1	1-1508-20	CERAMIC SLEEVE FOR SUPPORT SPINDLE
24	4	1-1103-8-7	SCREW, SEPARATOR/SPINDLE & MOUNTING (ea.)
25	1	1-1551-24	O-RING, SEPARATOR/SPINDLE
26	1	10110-10	O-RING, GEARBOX
27	4	1-1251-5-12	BOLT, GEARBOX MOUNTING (ea.)
28	-	1-1806	VIBRA-TITE, GEARBOX MOUNTING BOLT
29	1	4-2347	MITER GEAR FRAME ASSEMBLY (ITEMS 30 THRU 38)
30	1	2-2347	MITER GEAR FRAME
31	4	1-1504-2	BEARING, MITER GEAR FRAME (1/4" I.D.) (ea.)
32	1	3-2348	DRIVEN MAGNET & SHAFT ASSEMBLY
33	1	1-2354-A	DRIVEN MAGNET SPACER
34	1	3-2349	DRIVE MITER GEAR ASSEMBLY
35	1	3-2137	DRIVEN MITER GEAR ASSEMBLY
36	2	2-2148	SHIM WASHER (ea.)
37	1	2-2138	DRIVEN MITER GEAR SHAFT
38	1	1-1551-2	O-RING MITER GEAR FRAME
39	4	1-1103-8-7	SCREW, MITER GEAR FRAME MOUNTING (ea.)
40	1	5-2425-‡-PT	PROPELLER ASSEMBLY (ITEMS 41 THRU 51)
41	1	3-2425-‡-1-P	PROPELLER
42	1	2-2426-P-1	CERAMIC BEARING CARTRIDGE ASSEMBLY
43	1	1-1116-8-6	SCREW, CERAMIC BEARING CARTRIDGE MTG.
44	1	2-1601-2	DRIVE MAGNET
45	1	1-2428-‡	DRIVE MAGNET RETAINING PLATE
46	2	1-1115-3-18	SCREW, DRIVE MAGNET RETAINING PLATE
47	1	3-2402-2	REVERSE THRUST BEARING CARTRIDGE ASSEMBLY
48	1	1-1101-8-5	SET SCREW, REVERSE THRUST BEARING
49	2	1-1509-1	CERAMIC THRUST BEARING, 3/16" DIA. (ea.)
50	1	1-1125-6	SET SCREW, NYLON POINT
51	1	3-2356	THRUST BEARING CARTRIDGE ASSEMBLY
52	2	1-1510-1	CERAMIC THRUST BEARING, 1/4" DIA. (ea.)
53	3	3-2437-*	U-STRAP ASSEMBLY (ea.)
56	1	1-1552-23	D-RING, METER SADDLE
-	-	1-1804-2	GEARBOX OIL (1 OZ.)
-	1	10015-00K	DESICCANT BAG

*INSERT METER SIZE TO COMPLETE PART NUMBER (USE -06 FOR 6"; -08 FOR 8"; -10 for 10"; ETC.)

‡CONSULT FACTORY TO COMPLETE PART NUMBER

‡‡INSERT -06 FOR 6"; -08 FOR 8" - 20"

CONSULT FACTORY FOR PRICING.

When ordering replacement parts, please specify:

- Meter Size ● Meter Model ● Meter Serial Number

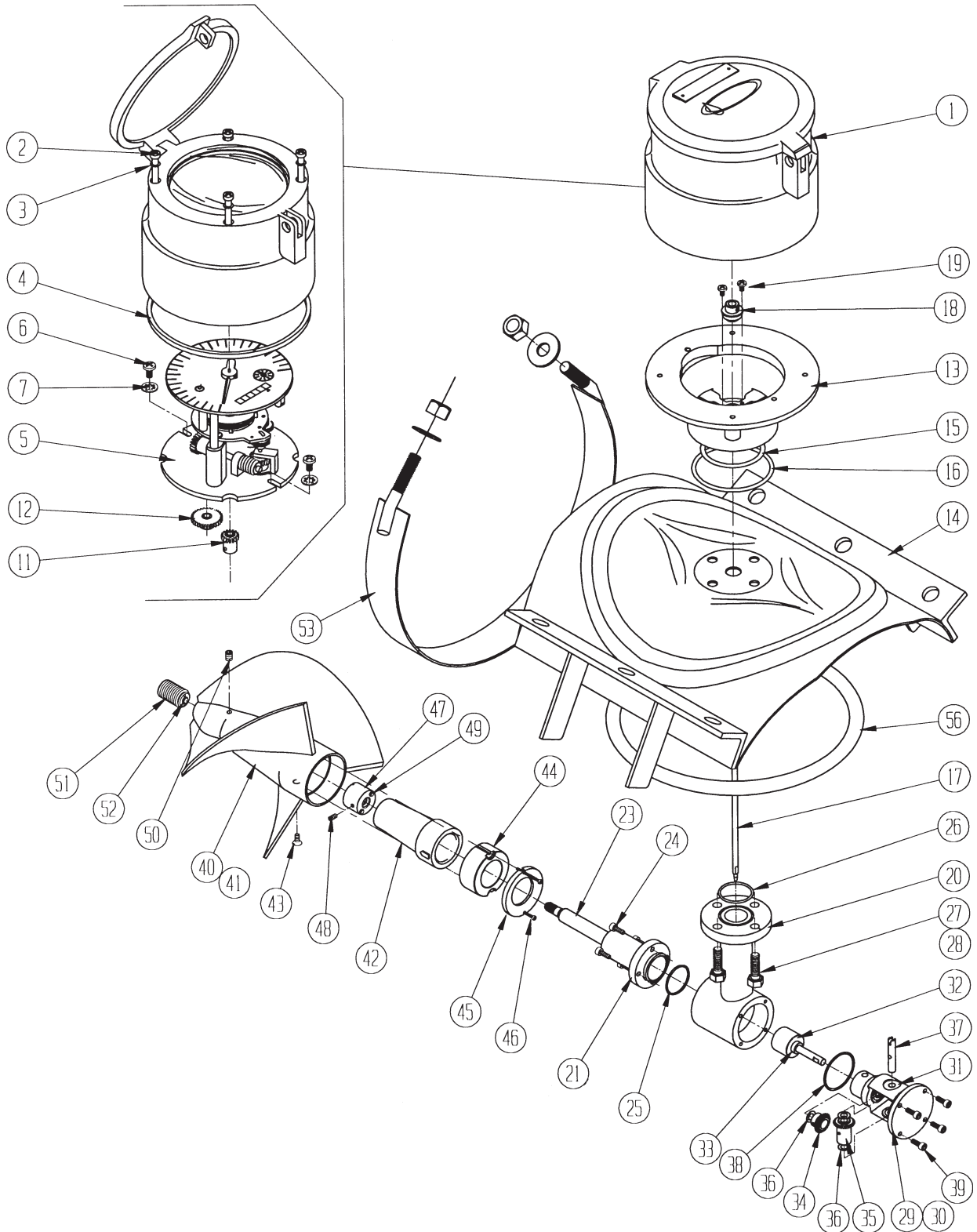
6"-20" STRAP-ON LOW PRESSURE METERS

MODEL LP04, LP12, LP32

*MODEL CN06-2 INDICATOR-TOTALIZER ASSEMBLY

*CERAMIC BEARING CARTRIDGE PROPELLER

*ONE PIECE SEPARATOR/SPINDLE & THREADED REVERSE THRUST BEARING CARTRIDGE



WARNING:

**BEFORE REMOVING THE METER SADDLE FROM THE PIPELINE
THE WATER MUST BE TURNED OFF AND PRESSURE MUST BE
RELIEVED FROM THE LINE. SERIOUS INJURY CAN RESULT FROM
REMOVING A METER SADDLE UNDER PRESSURE.**