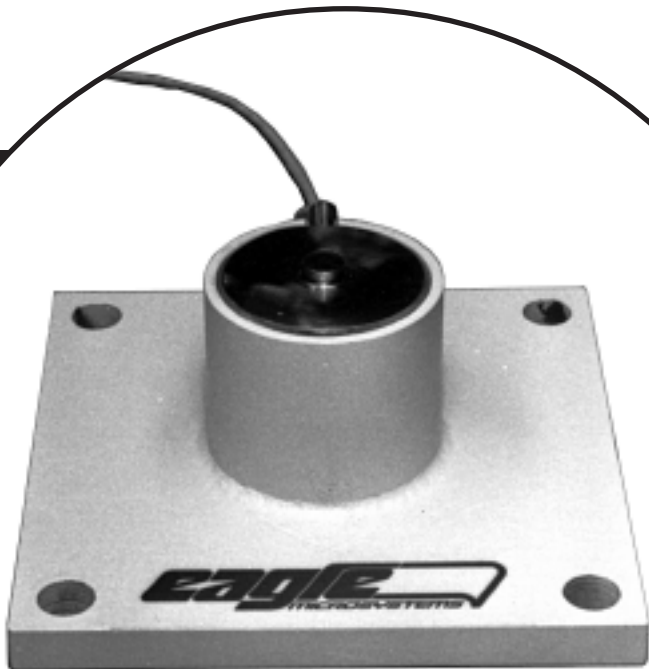


HC SERIES

Hydraulic-to-Electronic Load Cell Conversion Assembly



The Eagle Microsystems Model HC3600/7200 Hydraulic-to-Electronic Conversion Assembly is an electronic load cell replacement for hydraulic load cells used in ton container scales. The assembly has no moving parts and is immune to drifting problems associated with hydraulic load cells. Used with Eagle digital instrumentation the assembly inherently provides the capabilities of:

- Digital displays
- Low weight alarms
- Direct interface to remote instrumentation and computers or PLCs
- Improved weighing accuracy

System Features

- All electronic
- No hydraulic hysteresis or drifting
- Directly interchangeable with hydraulic load cells
- Rugged stainless steel strain gauge load cell
- Simple to install
- Easy to maintain
- Capacities for single and dual ton containers

Models Available

HC3600: for single ton container scales

HC7200: for dual ton container scales

HC SERIES

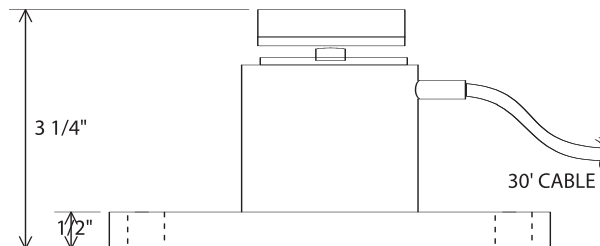
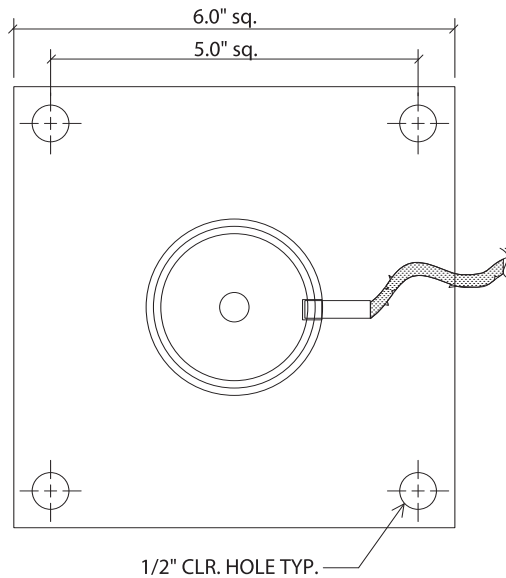
Your Source for Precision Process Solutions

eagle
MICROSYSTEMS

HC SERIES

Hydraulic-to-Electronic Load Cell Conversion Assembly

HC Performance Specifications		Physical	
Load Cell Accuracy	.25% Capacity	Capacities	
Non Linearity	±0.25% FS Typical	HC3600	4000 lbs
Hysteresis	±0.25% FS or Better	HC7200	8000 lbs
Overload Rating	250% Rated Cap	Weight	15 lbs.
		Load Cell Material	Stainless Steel
Environmental		Wiring Color Codes	
Zero Temp Error	.0025% Cap / °F Max	Red	+Excitation
Span Temp. Error	.005% Reading / °F Max	Green	+Signal
Compensated Temp. Range	0 to +115°F	White	-Signal
Operating Temp. Range	-30 to +150°F	Black	-Excitation
		Yellow	Shield
Electrical		NOTE: System accuracy is dependent on the structural design of the scale and will generally be limited to ±0.5% of rated cap.	
Output	0.5MV/V @ FS(Nom.)		
Excitation Voltage	10 to 15 Volts DC		
Input Resistance	1000 ± 10 OHMS		
Output Resistance	1000 ± 20 OHMS		



Ordering Information

For single ton container scale - Order: HC3600

For dual ton container scale - Order: HC7200

